

# AXIAL FAN

## JF Series

### Cylindrical cased axial flow fans



Jet fans to induce air movement in enclosed car parking, tunnels and large spaces.  
 JF models for air from -20°C to +40°C.  
 Range made of 7 diameters of tubular axial fans, from 315 mm to 630 mm.  
 Reversible impeller in aluminum.  
 Hot galvanised steel casing supplied with two support feet.  
 Two circular sound attenuators made of galvanised sheet steel.  
 Supplied with inlet and outlet guard.  
 External terminal box.

**Motors**

Available, depending upon the model:  
 - with three phase motors in 2 pole.  
 - with three phase two speed motors in 2/4 pole.  
 JF motors are IP55, Class F insulation.  
 Electrical supplies:  
 Three phase 400V-50Hz.

**On request**

Version with isolator.  
 Version with inlet guard and discharge deflector for uni-direction airflow.  
 Version with inlet and discharge deflector for reversible airflow.

A P P L I C A T I O N S



Parkings



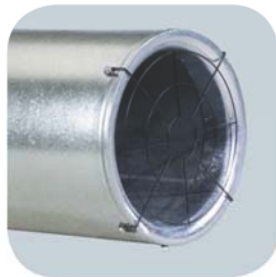
Tunnels

**External terminal box**



External terminal box for ease of connection

**Two protection guards fitted as standard**



Air protection guard to mount at the inlet or outlet side

**Optional isolator**



Electrical Isolator fitted to fan for security

**Optional deflector**



Deflector to direct air. Can be mounted at the inlet or outlet side

■ **Technical characteristics**

Model	Speed (rpm)	Thrust (N)	Airflow (m <sup>3</sup> /h)	Air velocity (m/s)	motor* (kW)	FLC* (A)	Sound level ** (dBA)		Weight* (kg)
							Form A	Form B	

**REVERSIBLE -1 speed 2 POLE -VENTILATION ONLY**

JF2-315	2810	24	4.500	16	0,75	1,8	71	64	56
JF2-355	2810	40	6.500	18	1,1	2,32	74	67	76
JF2-400	2870	60	9.000	20	1,5	3,07	79	71	87
JF2-450	2840	85	12.075	21	2,2	4,56	82	74	128
JF2-500	2890	150	17.850	25	4	7,55	85	78	146
JF2-560	2935	239	25.200	28	7,5	13,6	88	81	198
JF2-630	2930	390	36.225	33	15	25,5	92	85	260

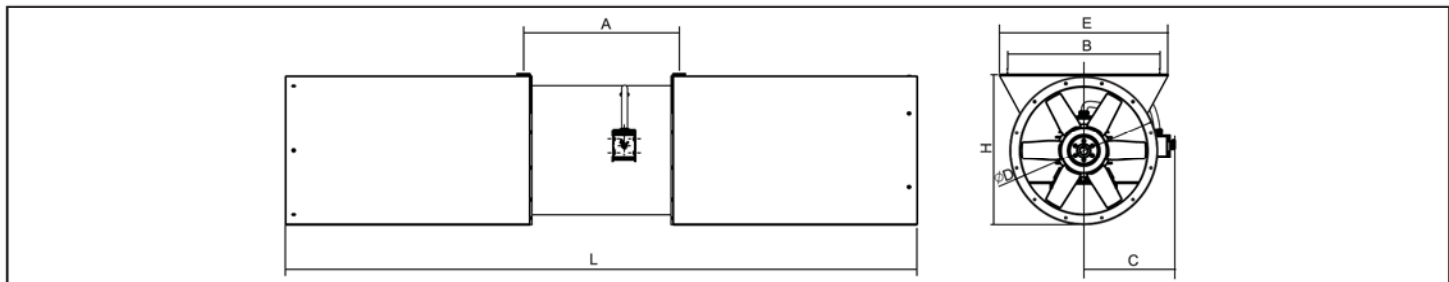
**REVERSIBLE -2 speed 2/4 POLE -VENTILATION ONLY**

JF2/4-315	2850/1440	24	4.500	16	0,85/0,2	1,9/0,7	71/56	64/49	56
JF2/4-355	2855/1450	40	6.500	18	1,1/0,25	2,4/0,85	74/59	67/52	76
JF2/4-400	2900/1435	60	9.000	20	1,5/0,33	3,3/1,1	79/64	71/56	87
JF2/4-450	2845/1420	85	12.075	21	2,2/0,45	4,6/1,4	82/67	74/59	128
JF2/4-500	2890/1440	150	17.850	25	4,5/1	8,4/2,4	85/70	78/63	153
JF2/4-560	2930/1470	239	25.200	28	8,3/1,7	15,4/4,2	88/73	81/66	212
JF2/4-630	2950/1470	390	36.225	33	16/3,2	28,5/7	92/77	85/70	268

\* May vary depending on motor used

\*\* Sound pressure at 1,5 m free field.

■ **Dimensions (mm)**



Model	A	B	C/I*	C/C**	D	E	H	L
315	410	205	284	235	386	480	397,5	1946
355	410	225	305	258	426	520	437,5	1946
400	450	250	330	282	487	580	498	1986
450	550	280	354	305	537	610	548	2488
500	550	313	383	330	595	675	612	2488
560	670	343	415	360	655	735	672	3010
630	770	378	452	422	725	835	743	3010

\* Optional C/I with isolator.

\*\* Standard C/C with terminal box.