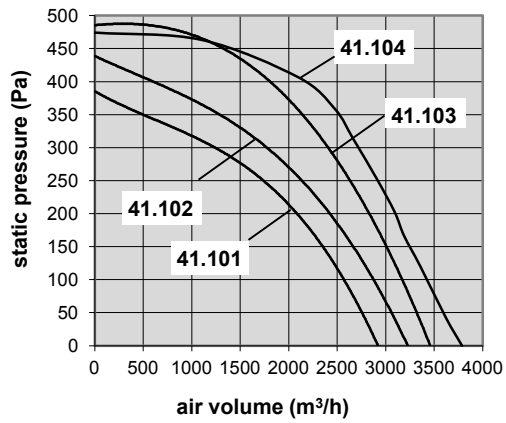
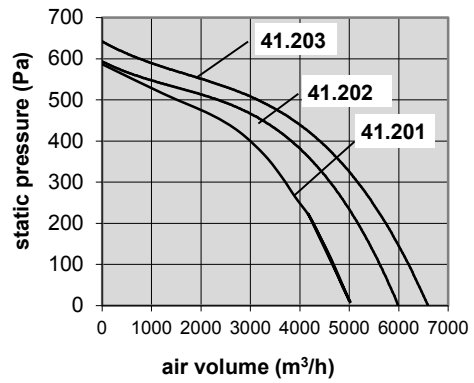


FISCHBACH - ROOF TOP UNITS - 41.xxx - standard series - diagram overview -

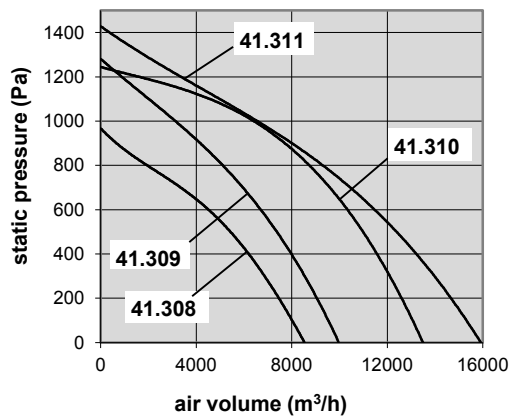
size 1 - 600x600x600 mm



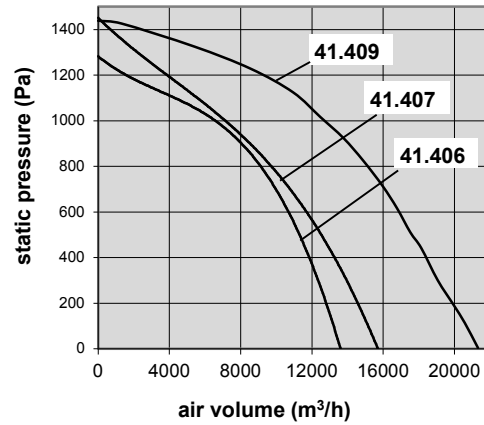
size 2 - 750x750x750 mm



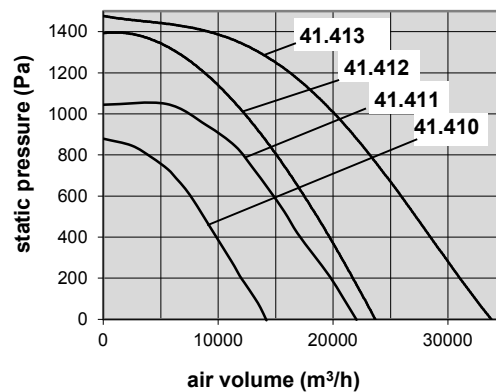
size 3 - 1000x1000x850 mm



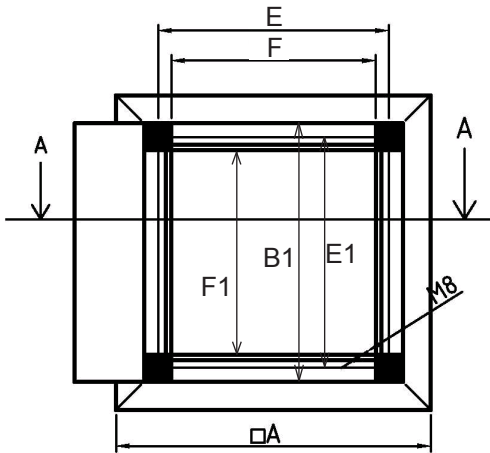
size 4-1 - 1350x1350x850 mm



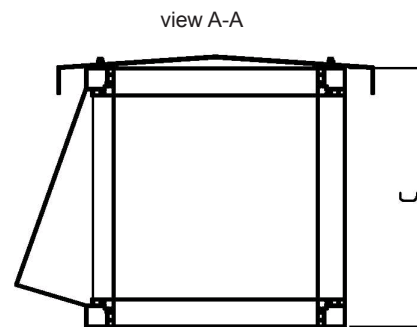
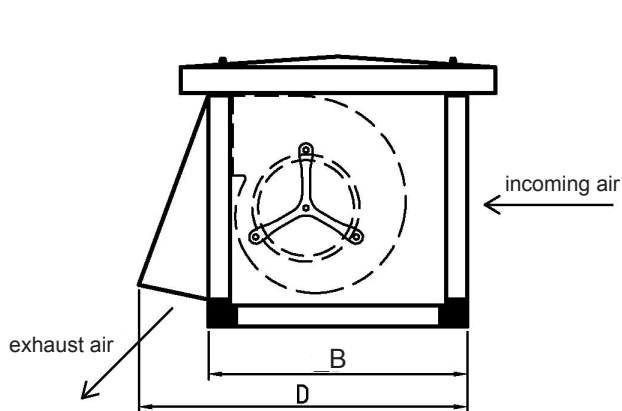
size 4-2 - 1350x1350x1350 mm



FISCHBACH - ROOF TOP UNITS - 41.xxx - standard series - casing dimensions overview and performances -



size	A	B	B1	C	D	E	E1	F	F1
N1	730	600	600	600	990	534	534	474	474
N2	880	750	750	750	1240	684	684	624	624
N3	1130	1000	1000	1000	1605	934	934	874	874
N4-1	1480	850	1350	1350	2230	784	1284	724	1224
N4-2	1480	1350	1350	1350	2230	1284	1284	1224	1224



performance table

size	type	part no.	I_{MAX}	P_{MAX}	V_{MAX}	size	type	part no.	I_{MAX}	P_{MAX}	V_{MAX}
			(A)	(kW)	(m ³ /h)				(A)	(kW)	(m ³ /h)
1	41.101	8411010	3,3	0,9	2931	3	41.310	8413100	17,5	8,4	12085
	41.102	8411020	4,4	1,1	3240		41.311	8413110	17,8	9,0	12615
	41.103	8411030	5,2	1,2	3445	4-1	41.406	8414060	17,9	9,2	12070
	41.104	8411040	6,0	1,4	3752		41.407	8414070	18,0	10,0	14700
2	41.201	8412008	6,6	1,5	5435	41.409	8414090	38,0	20,0	21855	
	41.202	8412009	9,1	2,0	5760	4-2	41.410	8414100	7,8	3,7	16500
	41.203	8412010	5,6	2,5	6700		41.411	8414110	16,3	7,9	22305
3	41.308	8413080	7,3	3,7	8495	41.412	8414120	14,5	7,3	24000	
	41.309	8413090	10,9	5,3	9955	41.413	8414130	30,2	13,9	33730	

41.101 - 41.202 - 1 x 230V - single-phase motor
41.203 - 41.413 - 3 x 400V - three-phase motor

41... series „standard“

sound data for Roof Top Units

type: 41.101 Fan: D 540/E 25

* sound pressure level in dB (A)							
operat. voltage	80	100	125	150	170	190	230
inlet	40	46	53	58	61	63	66
discharge	41	48	54	60	63	65	68

* referring to a room absorption of 8 db (25m² Sabine) measured in a distance of 3m

inlet side: sound power level Lw in [dB] (linear) at mid frequency in [Hz] (at free air)										A-weighted [dB(A)]	discharge side: sound power level Lw in [dB] (linear) at mid frequency in [Hz] (at free air)										A-weighted [dB(A)]
oper. volts [Volt]	63	125	250	500	1000	2000	4000	8000	total 45-11200	oper. volts [Volt]	63	125	250	500	1000	2000	4000	8000	total 45-11200		
80	46	41	41	46	43	38	37	32	48	80	47	43	43	48	44	40	38	33	49		
100	51	47	48	52	49	45	43	39	54	100	52	49	49	54	51	46	45	40	56		
125	56	54	54	59	56	52	50	46	61	125	58	56	56	60	58	54	52	47	62		
150	60	59	59	63	61	58	56	51	66	150	62	61	61	65	63	59	57	53	67		
170	63	62	62	66	65	61	59	54	69	170	64	64	64	68	66	63	61	56	71		
190	64	64	64	68	67	63	61	56	71	190	66	66	66	70	69	65	63	58	73		
230	67	67	67	71	70	66	64	59	74	230	69	69	69	73	72	68	66	61	76		

type: 41.102 Fan: D640/E 35

* sound pressure level in dB (A)							
operat. voltage	80	100	125	150	170	190	230
inlet	40	48	56	61	64	66	68
discharge	42	49	57	63	66	68	70

* referring to a room absorption of 8 db (25m² Sabine) measured in a distance of 3m

inlet side: sound power level Lw in [dB] (linear) at mid frequency in [Hz] (at free air)										A-weighted [dB(A)]	discharge side: sound power level Lw in [dB] (linear) at mid frequency in [Hz] (at free air)										A-weighted [dB(A)]
oper. volts [Volt]	63	125	250	500	1000	2000	4000	8000	total 45-11200	oper. volts [Volt]	63	125	250	500	1000	2000	4000	8000	total 45-11200		
80	50	45	41	44	43	41	41	37	48	80	50	47	47	48	48	44	43	39	52		
100	57	54	50	53	52	50	50	46	57	100	57	55	55	57	57	53	52	48	61		
125	62	61	57	60	59	58	58	54	65	125	63	62	63	65	65	61	59	55	69		
150	67	66	62	66	65	63	63	59	71	150	68	68	68	71	71	67	65	61	75		
170	69	68	64	68	67	66	66	62	73	170	69	70	70	73	73	70	68	64	77		
190	69	69	65	69	68	67	67	63	74	190	70	71	71	74	74	71	69	65	78		
230	72	72	68	72	71	70	70	66	77	230	73	74	74	77	77	74	72	68	82		

type: 41.103 Fan: DS 6-740/E 35

* sound pressure level in dB (A)							
operat. voltage	80	100	125	150	170	190	230
inlet	40	46	53	57	60	62	65
discharge	44	51	57	62	65	67	70

* referring to a room absorption of 8 db (25m² Sabine) measured in a distance of 3m

inlet side: sound power level Lw in [dB] (linear) at mid frequency in [Hz] (at free air)										A-weighted [dB(A)]	discharge side: sound power level Lw in [dB] (linear) at mid frequency in [Hz] (at free air)										A-weighted [dB(A)]
oper. volts [Volt]	63	125	250	500	1000	2000	4000	8000	total 45-11200	oper. volts [Volt]	63	125	250	500	1000	2000	4000	8000	total 45-11200		
80	45	41	41	46	43	39	37	32	48	80	50	46	46	51	47	43	42	37	52		
100	51	48	48	53	50	46	44	39	54	100	55	52	53	57	54	50	49	44	59		
125	55	54	54	58	56	52	50	45	61	125	60	58	59	63	61	57	55	50	65		
150	59	58	59	63	61	57	55	51	65	150	64	63	63	67	66	62	60	55	70		
170	61	61	61	65	64	60	58	53	68	170	66	66	66	70	69	65	63	58	73		
190	63	63	63	67	66	62	60	55	70	190	68	68	68	72	71	67	65	60	75		
230	65	66	66	69	69	65	63	58	73	230	70	71	71	74	74	70	68	63	78		

41... series „standard“

sound data for Roof Top Units

type: 41.104 fan: DS 6-740/E 65										* sound pressure level in dB (A)											
										operat. voltage	80	100	125	150	170	190	230				
										inlet *	39	45	51	56	58	61	64				
										discharge **	43	50	55	60	63	66	69				
										* referring to a room absorption of 8 db (25m ² Sabine) measured in a distance of 3m											
inlet side: sound power level Lw in [dB] (linear) at mid frequency in [Hz] (at free air)										A-weighted [dB(A)]	discharge side: sound power level Lw in [dB] (linear) at mid frequency in [Hz] (at free air)										A-weighted [dB(A)]
oper. volts [Volt]	63	125	250	500	1000	2000	4000	8000	total 45-11200	oper. volts [Volt]	63	125	250	500	1000	2000	4000	8000	total 45-11200		
80	44	40	40	45	42	37	36	31	47	80	49	44	45	50	46	42	40	35	51		
100	49	46	47	51	48	44	43	38	53	100	54	51	51	56	53	49	47	42	58		
125	54	52	52	57	54	50	49	44	59	125	59	57	57	61	59	55	53	48	63		
150	58	57	57	61	59	55	53	49	64	150	62	61	62	66	64	60	58	53	68		
170	60	59	60	63	62	58	56	51	66	170	65	64	64	68	67	63	61	56	71		
190	62	62	62	66	64	61	59	54	69	190	67	66	67	70	69	66	64	59	74		
230	65	65	65	69	68	65	62	58	72	230	70	70	70	74	73	70	67	62	77		

type: 41.201 fan: D770/E 65										sound pressure level in dB (A)											
										operat. voltage	80	100	125	150	170	190	230				
										inlet *	41	47	53	58	61	63	66				
										discharge **	25	31	37	42	45	47	51				
										* referring to a room absorption of 8 db (25m ² Sabine) measured in a distance of 3m ** rated outside in a distance of 5m											
inlet side: sound power level Lw in [dB] (linear) at mid frequency in [Hz] (at free air)										A-weighted [dB(A)]	discharge side: sound power level Lw in [dB] (linear) at mid frequency in [Hz] (at free air)										A-weighted [dB(A)]
oper. volts [Volt]	63	125	250	500	1000	2000	4000	8000	total 45-11200	oper. volts [Volt]	63	125	250	500	1000	2000	4000	8000	total 45-11200		
80	50	46	42	45	44	42	42	38	49	80	51	47	48	49	49	45	43	40	53		
100	55	51	48	51	50	47	48	44	55	100	55	53	53	55	55	51	49	46	59		
125	60	57	53	57	56	54	54	50	61	125	60	59	59	61	61	57	56	52	65		
150	63	62	58	61	60	59	59	55	66	150	64	63	64	66	66	62	60	57	70		
170	65	64	60	64	63	61	61	58	69	170	66	66	66	69	69	65	63	59	73		
190	67	66	63	66	65	64	64	60	71	190	68	68	69	71	71	68	66	62	75		
230	70	70	66	70	69	67	67	63	74	230	71	72	72	75	75	71	69	65	79		

type: 41.202 fan: D 770/E 80										sound pressure level in dB (A)											
										operat. voltage	80	100	125	150	170	190	230				
										inlet *	40	49	57	63	65	66	69				
										discharge **	24	33	41	47	49	50	54				
										* referring to a room absorption of 8 db (25m ² Sabine) measured in a distance of 3m ** rated outside in a distance of 5m											
inlet side: sound power level Lw in [dB] (linear) at mid frequency in [Hz] (at free air)										A-weighted [dB(A)]	discharge side: sound power level Lw in [dB] (linear) at mid frequency in [Hz] (at free air)										A-weighted [dB(A)]
oper. volts [Volt]	63	125	250	500	1000	2000	4000	8000	total 45-11200	oper. volts [Volt]	63	125	250	500	1000	2000	4000	8000	total 45-11200		
80	50	45	41	44	43	41	41	37	48	80	50	47	47	48	48	44	43	39	52		
100	57	54	50	53	52	50	50	46	57	100	57	55	55	57	57	53	52	48	61		
125	62	61	57	60	59	58	58	54	65	125	63	62	63	65	65	61	59	55	69		
150	67	66	62	66	65	63	63	59	71	150	68	68	68	71	71	67	65	61	75		
170	69	68	64	68	67	66	66	62	73	170	69	70	70	73	73	70	68	64	77		
190	69	69	65	69	68	67	67	63	74	190	70	71	71	74	74	71	69	65	78		
230	72	72	68	72	71	70	70	66	77	230	73	74	74	77	77	74	72	68	82		

41... series „standard“

sound data for Roof Top Units

type: 41.203

fan: D 770/D 1

* sound pressure level in dB (A)

operat. voltage	120	180	230	280	400
inlet	48	54	62	65	72
discharge	52	58	66	70	76

* referring to a room absorption of 8 db (25m² Sabine)
measured in a distance of 3m

inlet side: sound power level Lw in [dB] (linear) at mid frequency in [Hz] (at free air)										A-weighted [dB(A)]	discharge side: sound power level Lw in [dB] (linear) at mid frequency in [Hz] (at free air)										A-weighted [dB(A)]
oper. volts [Volt]	63	125	250	500	1000	2000	4000	8000	total 45-11200	oper. volts [Volt]	63	125	250	500	1000	2000	4000	8000	total 45-11200		
120	55	52	48	51	50	48	48	45	56	120	56	54	54	56	56	52	50	46	60		
180	60	58	54	57	56	54	54	50	62	180	61	59	59	62	62	58	56	52	66		
230	66	65	61	65	64	62	62	58	70	230	67	67	67	70	70	66	64	60	74		
280	69	68	65	68	67	66	66	62	73	280	70	70	70	73	73	70	68	64	77		
400	74	74	71	75	74	73	72	68	80	400	75	77	77	80	80	77	74	70	84		

type: 41.308

fan: D 970/D 2

sound pressure level in dB (A)

operat. voltage	120	180	230	280	400
inlet *	52	57	65	6	71
discharge **	34	40	45	48	53

* referring to a room absorption of 8 db (25m² Sabine)
measured in a distance of 3m

** rated outside in a distance of 5m

inlet side: sound power level Lw in [dB] (linear) at mid frequency in [Hz] (at free air)										A-weighted [dB(A)]	discharge side: sound power level Lw in [dB] (linear) at mid frequency in [Hz] (at free air)										A-weighted [dB(A)]
oper. volts [Volt]	63	125	250	500	1000	2000	4000	8000	total 45-11200	oper. volts [Volt]	63	125	250	500	1000	2000	4000	8000	total 45-11200		
120	58	55	52	55	54	52	52	48	59	120	57	55	56	58	58	54	52	48	62		
180	63	61	57	61	60	58	58	54	65	180	62	61	61	64	64	60	58	54	68		
230	67	66	62	66	65	63	63	59	70	230	66	66	66	69	69	65	63	59	73		
280	69	69	65	69	68	67	67	63	74	280	68	69	69	72	72	69	67	63	76		
400	73	74	70	74	73	72	72	67	79	400	72	74	74	77	77	74	72	67	81		

type: 41.309

fan: DS 9-070/D 2.5

sound pressure level in dB (A)

operat. voltage	120	180	230	280	400
inlet *	52	62	66	69	74
discharge **	35	44	48	51	56

* referring to a room absorption of 8 db (25m² Sabine)
measured in a distance of 3m

** rated outside in a distance of 5m

inlet side: sound power level Lw in [dB] (linear) at mid frequency in [Hz] (at free air)										A-weighted [dB(A)]	discharge side: sound power level Lw in [dB] (linear) at mid frequency in [Hz] (at free air)										A-weighted [dB(A)]
oper. volts [Volt]	63	125	250	500	1000	2000	4000	8000	total 45-11200	oper. volts [Volt]	63	125	250	500	1000	2000	4000	8000	total 45-11200		
120	59	56	52	56	55	53	53	49	60	120	58	56	56	59	59	55	53	49	63		
180	66	65	61	65	64	62	62	58	70	180	65	65	65	68	68	64	62	58	72		
230	69	69	65	69	68	67	67	63	74	230	68	69	69	72	72	69	67	63	76		
280	72	72	68	72	71	70	70	66	77	280	71	72	72	75	75	72	70	66	79		
400	75	76	73	77	76	75	74	70	82	400	74	76	77	80	80	77	74	70	84		

41... series „standard“

sound data for Roof Top Units

type: 41.310 fan: DS 9-070/D 5

sound pressure level in dB (A)					
operat. voltage	120	180	230	280	400
inlet *	57	67	72	75	78
discharge **	39	49	54	57	60

* referring to a room absorption of 8 db (25m² Sabine)
measured in a distance of 3m
** rated outside in a distance of 5m

inlet side: sound power level Lw in [dB] (linear) at mid frequency in [Hz] (at free air)										A-weighted [dB(A)]	discharge side: sound power level Lw in [dB] (linear) at mid frequency in [Hz] (at free air)										A-weighted [dB(A)]
oper. volts [Volt]	63	125	250	500	1000	2000	4000	8000	total 45-11200		oper. volts [Volt]	63	125	250	500	1000	2000	4000	8000	total 45-11200	
120	62	60	57	60	69	57	57	53	65		120	61	60	61	63	63	59	57	53	67	
180	70	70	66	70	69	68	67	63	75		180	69	70	70	73	73	70	67	63	77	
230	74	74	71	75	74	73	72	68	80		230	73	74	75	78	78	75	72	68	82	
280	76	77	74	78	77	76	75	71	83		280	75	77	78	81	81	78	75	71	85	
400	78	80	76	81	80	79	78	74	86		400	77	80	80	84	84	81	78	74	88	

type: 41.311 fan: DS 9-001/D 5

sound pressure level in dB (A)					
operat. voltage	120	180	230	280	400
inlet *	56	67	72	75	78
discharge **	38	49	54	57	60

* referring to a room absorption of 8 db (25m² Sabine)
measured in a distance of 3m
** rated outside in a distance of 5m

inlet side: sound power level Lw in [dB] (linear) at mid frequency in [Hz] (at free air)										A-weighted [dB(A)]	discharge side: sound power level Lw in [dB] (linear) at mid frequency in [Hz] (at free air)										A-weighted [dB(A)]
oper. volts [Volt]	63	125	250	500	1000	2000	4000	8000	total 45-11200		oper. volts [Volt]	63	125	250	500	1000	2000	4000	8000	total 45-11200	
120	62	60	56	59	58	57	57	53	64		120	61	60	60	62	62	59	57	53	66	
180	70	70	66	70	69	68	67	63	75		180	69	70	70	73	73	70	67	63	77	
230	74	74	71	75	74	73	72	68	80		230	73	74	75	78	78	75	72	68	82	
280	76	77	74	78	77	76	75	71	83		280	75	77	78	81	81	78	75	71	85	
400	78	80	77	81	80	79	79	75	86		400	77	80	81	84	84	81	79	75	83	

type: 41.406 fan: DS 9-070/D 5

sound pressure level in dB (A)					
operat. voltage	120	180	230	280	400
inlet *	57	67	72	75	78
discharge **	39	49	54	57	60

* referring to a room absorption of 8 db (25m² Sabine)
measured in a distance of 3m
** rated outside in a distance of 5m

inlet side: sound power level Lw in [dB] (linear) at mid frequency in [Hz] (at free air)										A-weighted [dB(A)]	discharge side: sound power level Lw in [dB] (linear) at mid frequency in [Hz] (at free air)										A-weighted [dB(A)]
oper. volts [Volt]	63	125	250	500	1000	2000	4000	8000	total 45-11200		oper. volts [Volt]	63	125	250	500	1000	2000	4000	8000	total 45-11200	
120	62	60	57	60	59	57	57	53	65		120	61	60	61	63	63	59	57	53	67	
180	70	70	66	70	69	68	67	63	75		180	69	70	70	73	73	70	67	63	77	
230	74	74	71	75	74	73	72	68	80		230	73	74	75	78	78	75	72	68	82	
280	76	77	74	78	77	76	75	71	83		280	75	77	78	81	81	78	75	71	85	
400	78	80	76	81	80	79	78	74	86		400	77	80	80	84	84	81	78	74	88	

41... series „standard“

sound data for Roof Top Units

type: 41.407 fan: DS 9-001/D 5

sound pressure level in dB (A)					
operat. voltage	120	180	230	280	400
inlet *	56	67	72	75	78
discharge **	38	49	54	57	60

* referring to a room absorption of 8 db (25m² Sabine)
measured in a distance of 3m
** rated outside in a distance of 5m

inlet side: sound power level Lw in [dB] (linear) at mid frequency in [Hz] (at free air)										A-weighted [dB(A)]	discharge side: sound power level Lw in [dB] (linear) at mid frequency in [Hz] (at free air)										A-weighted [dB(A)]
oper. volts [Volt]	63	125	250	500	1000	2000	4000	8000	total 45-11200	oper. volts [Volt]	63	125	250	500	1000	2000	4000	8000	total 45-11200		
120	62	60	56	59	58	57	57	53	64	120	61	60	60	62	62	59	57	53	66		
180	70	70	66	70	69	68	67	63	75	180	69	70	70	73	73	70	67	63	77		
230	74	74	71	75	74	73	72	68	80	230	73	74	75	78	78	75	72	68	82		
280	76	77	74	78	77	76	75	71	83	280	75	77	78	81	81	78	75	71	85		
400	78	80	77	81	80	79	79	75	86	400	77	80	81	84	84	81	79	75	88		

type: 41.409 fan: DS 0-101/TD 10

sound pressure level in dB (A)					
operat. voltage	120	180	230	280	400
inlet *	62	71	75	78	81
discharge **	45	53	58	61	64

* referring to a room absorption of 8 db (25m² Sabine)
measured in a distance of 3m
** rated outside in a distance of 5m

inlet side: sound power level Lw in [dB] (linear) at mid frequency in [Hz] (at free air)										A-weighted [dB(A)]	discharge side: sound power level Lw in [dB] (linear) at mid frequency in [Hz] (at free air)										A-weighted [dB(A)]
oper. volts [Volt]	63	125	250	500	1000	2000	4000	8000	total 45-11200	oper. volts [Volt]	63	125	250	500	1000	2000	4000	8000	total 45-11200		
120	67	66	62	66	65	63	63	59	70	120	66	66	66	69	69	65	63	59	73		
180	73	74	70	74	73	72	72	68	79	180	72	74	74	77	77	74	72	68	81		
230	77	78	74	79	78	77	76	72	83	230	76	78	78	82	82	79	76	72	86		
280	79	81	77	81	80	79	79	75	86	280	78	81	81	84	84	81	79	75	89		
400	81	84	80	84	83	83	82	78	89	400	80	84	84	87	87	85	82	78	92		

type: 41.410 fan: HD 500/D 2.5

* sound pressure level in dB (A)					
operat. voltage	120	180	230	280	400
inlet	43	59	68	73	80
discharge	47	63	72	77	85

* referring to a room absorption of 8 db (25m² Sabine)
measured in a distance of 3m

inlet side: sound power level Lw in [dB] (linear) at mid frequency in [Hz] (at free air)										A-weighted [dB(A)]	discharge side: sound power level Lw in [dB] (linear) at mid frequency in [Hz] (at free air)										A-weighted [dB(A)]
oper. volts [Volt]	63	125	250	500	1000	2000	4000	8000	total 45-11200	oper. volts [Volt]	63	125	250	500	1000	2000	4000	8000	total 45-11200		
120	55	50	57	35	34	40	38	46	51	120	55	51	63	40	40	43	40	47	55		
180	68	68	74	59	58	58	56	56	67	180	68	69	78	62	62	61	56	57	71		
230	75	77	81	69	68	67	64	61	76	230	75	77	86	73	73	70	65	62	80		
280	79	82	85	76	75	72	70	65	81	280	79	83	90	80	80	75	71	65	85		
400	85	88	91	84	83	80	77	69	88	400	84	89	96	88	88	83	78	70	93		

41... series „standard“

sound data for Roof Top Units

type: 41.411 fan: HD 560/D 5

* sound pressure level in dB (A)					
operat. voltage	120	180	230	280	400
inlet	43	61	71	77	83
discharge	47	65	75	81	87

* referring to a room absorption of 8 db (25m² Sabine) measured in a distance of 3m

inlet side: sound power level Lw in [dB] (linear) at mid frequency in [Hz] (at free air)										A-weighted [dB(A)]	discharge side: sound power level Lw in [dB] (linear) at mid frequency in [Hz] (at free air)										A-weighted [dB(A)]
oper. volts [Volt]	63	125	250	500	1000	2000	4000	8000	total 45-11200		oper. volts [Volt]	63	125	250	500	1000	2000	4000	8000	total 45-11200	
120	55	50	57	35	34	39	38	45	51		120	55	51	63	39	39	43	40	47	55	
180	69	70	75	60	59	59	57	57	69		180	69	70	80	64	64	62	58	58	73	
230	78	80	84	73	72	70	68	63	79		230	77	81	89	77	77	73	69	64	83	
280	82	85	88	80	79	77	74	67	85		280	82	86	93	84	84	80	75	68	89	
400	87	91	93	87	86	83	79	70	91		400	87	92	98	91	91	86	81	71	95	

type: 41.412 fan: HD 630/D 5
sound data: only fan!

* sound pressure level in dB (A)					
operat. voltage	120	180	230	280	400
inlet *	70	80	87	91	93
discharge **	54	63	71	76	77

* sound pressure level A - rated in a distance of 4m from the inlet, (room absorption 8 db)
** sound pressure level A - rated at free air in a distance of 4m from the discharge, (absorption 20 db)

inlet side: sound power level Lw in [dB] (linear) at mid frequency in [Hz] (at free air)										A-weighted [dB(A)]	discharge side: sound power level Lw in [dB] (linear) at mid frequency in [Hz] (at free air)										A-weighted [dB(A)]
oper. volts [Volt]	63	125	250	500	1000	2000	4000	8000	total 45-11200		oper. volts [Volt]	63	125	250	500	1000	2000	4000	8000	total 45-11200	
120	77	73	80	77	73	63	56	54	84		120	79	72	73	73	69	66	57	59	82	
180	90	83	90	87	81	73	74	62	95		180	84	82	84	82	77	68	72	61	90	
230	93	91	97	92	92	79	84	78	100		230	89	89	91	89	88	75	80	74	96	
280	96	93	100	95	96	84	87	85	104		280	90	96	98	92	93	80	83	83	102	
400	96	95	101	96	99	86	88	89	105		400	93	96	98	93	94	83	84	87	103	

type: 41.413 fan: HD 630/TD 10

* sound pressure level in dB (A)					
operat. voltage	120	180	230	280	400
inlet	55	73	81	88	90
discharge	60	78	86	91	95

* referring to a room absorption of 8 db (25m² Sabine) measured in a distance of 3m

inlet side: sound power level Lw in [dB] (linear) at mid frequency in [Hz] (at free air)										A-weighted [dB(A)]	discharge side: sound power level Lw in [dB] (linear) at mid frequency in [Hz] (at free air)										A-weighted [dB(A)]
oper. volts [Volt]	63	125	250	500	1000	2000	4000	8000	total 45-11200		oper. volts [Volt]	63	125	250	500	1000	2000	4000	8000	total 45-11200	
120	64	63	69	52	51	53	51	53	63		120	65	65	75	57	57	56	53	55	68	
180	79	81	85	76	75	72	69	64	81		180	80	83	91	81	81	76	71	66	86	
230	85	88	91	85	84	80	77	69	89		230	86	90	97	90	90	84	79	71	94	
280	88	92	95	90	89	85	82	71	94		280	89	95	101	95	95	89	84	73	99	
400	91	96	98	94	93	89	86	74	98		400	92	98	104	99	99	94	88	76	103	

FISCHBACH - ROOF TOP UNITS - 41.xxx - standard series - speed controller assignment -

assignment of the speed controllers for roof top units

with double inlet fans			with fan	automatic speed control	speed controller, stepless		speed controller, stepwise		
			.../E = 230V, 1N~ .../D = 400V, 3N~	with casing, without sensor and pre-set device	with casing, with rotary knob and scale		with casing, with step switch		
size	type	part no.	type	type	part no.	type	part no.	type	part no.
1	41.101	8411010	D 540/E 25	FRA 55	8062521	FDR 55	8061631	FDR 420	8062011
	41.102	8411020	D 640/E 35	FRA 55	8062521	FDR 55	8061631	FDR 750	8062021
	41.103	8411030	DS 6-740/E35	FRA 55	8062521	FDR 55	8061631	FDR 750	8062021
	41.104	8411040	DS 6-740/E 65	FRA 80	8062531	FDR 80	8061641	FDR 750	8062021
2	41.201	8412008	D 770/E 65	FRA 80	8062531	FDR 80	8061641	FDR 750	8062021
	41.202	8412009	D 770/E 80	FRA 120	8062551	FDR 120	8061651	FDR 1300	8062042
	41.203	8412010	D 770/D 1	FRA 55/3	8062811	FDR 55/3	8062312	FDR 5.5/3	8061821
3	41.308	8413080	D 970/D 2	FRA 80/3	8062821	FDR 80/3	8062321	FDR 8.0/3	8061831
	41.309	8413090	DS 9-070/D 2.5	FRA 120/3	8062831	FDR 120/3	8062331	FDR 11.3/3	8061851
	41.310	8413100	DS 9-070/D 5	FRA 200/3	8062851	FDR 200/3	8062351	FDR 20/3	8061771
	41.311	8413110	DS 9-001/D 5	FRA 200/3	8062851	FDR 200/3	8062351	FDR 20/3	8061771
4-1	41.406	8414060	DS 9-070/D 5	FRA 200/3	8062851	FDR 200/3	8062351	FDR 20/3	8061771
	41.407	8414070	DS 9-001/D 5	FRA 200/3	8062851	FDR 200/3	8062351	FDR 20/3	8061771
	41.409	8414090	DS 0-101/ TD 10	FRA 400/3	8062871	FDR 400/3	8062371	FDR 40/3	8061791
4-2	41.410	8414100	HD500 / D2.5	FRA 120/3	8062831	FDR 120/3	8062331	FDR 11.3/3	8061851
	41.411	8414110	HD560 / D5	FRA 200/3	8062851	FDR 200/3	8062351	FDR 20/3	8061771
	41.412	8414120	HD630 / D5	FRA 200/3	8062851	FDR 200/3	8062351	FDR 20/3	8061771
	41.413	8414130	HD630 / TD10	FRA 400/3	8062871	FDR 400/3	8062371	FDR 40/3	8061791

41.101 - 41.202 - 1 x 230V - single-phase motor - also available as electronic speed controller FRE 6/12.

41.203 - 41.413 - 3 x 400V - three-phase motor - also available with frequency converter FFUxx.